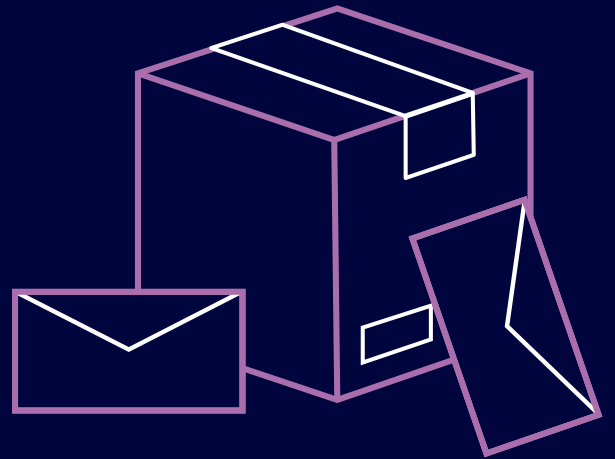




# PREVENTING PARCEL THEFT



With an increase in online shopping and deliveries, it's important to take proactive measures to deter theft and protect belongings. Here are five strategies to help you stop thieves and keep deliveries safe:

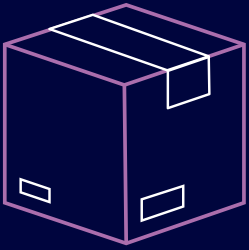
## HOME SECURITY DEVICES

- Installing home security devices such as outdoor cameras or a video doorbell can help deter thieves. While these types of devices are great for capturing the moment of theft, they aren't usually enough to stop the crime from happening in the first place. You can submit the imagery to police for investigation or use it to prove your package was stolen to the retailer.
- You might also consider adding a motion sensor light that will turn on any time it's dark when movement is detected, which can help guests and delivery people, but also deter thieves who don't want to be seen.

## SHIP TO A SECURE LOCATION OR CLICK & COLLECT

- Australia Post now offers a range of ways to receive a parcel, you can collect your parcel when and where it suits you from any of their collection points – a Post Office, a PO Box or a free 24/7 Parcel Locker.
- A large number of sellers also offer services such as Parcel Point which provides a network of local delivery, pickup and return locations – convenience stores, pharmacies, service stations – all open late and on weekends – all around Australia, where you can have a parcel delivered, and pick up or drop off whenever you like.
- Similarly, most stores offer Click & Collect services for online purchases.

**A MESSAGE FROM NSW POLICE FORCE**



# PREVENTING PARCEL THEFT

## PARCEL DELIVERY BOXES

- A parcel delivery box at the entryway is a great option for secure package delivery. They are usually tough, weather resistant and virtually tamper-proof.
- With multiple ways to open, such as pin-code and remote opening they are easy for home residents and delivery workers to use.

## REQUEST SIGNATURE CONFIRMATION OF DELIVERY

- If you know you or someone in your household will be home and willing to answer the door, you can add signature confirmation to your delivery. This means that the package can only be left with someone who signs for it rather than just left at the entryway.
- Australia Post will also allow you to direct your parcel to a new delivery address if plans change to ensure someone is home to receive the parcel, even if it's already on it's way to you.

## REQUEST PACKAGES BE PLACED IN A SECURE LOCATION

- When you order something you may have the opportunity to add a delivery request. In this place you can note the package should be placed out of plain sight, especially from the street, such as behind a plant or under porch stairs.
- From making sure you're home to receive a signature confirmation delivery to using a parcel delivery box or having your parcel shipped to a secure location, these tips help you stop thieves in their tracks so you can get your packages safe and sound every time.



**Triple Zero (000)**

For emergencies or life threatening situations.






**Police Assistance Line (131 444)**

For non emergencies.



**Crime Stoppers (1800 333 000)**

To provide crime information. It can be in confidence.

Follow us on  [facebook.com/nswpoliceforce](https://facebook.com/nswpoliceforce)  [twitter.com/nswpolice](https://twitter.com/nswpolice)  [youtube.com/thenswpolice](https://youtube.com/thenswpolice) or visit [www.police.nsw.gov.au](https://www.police.nsw.gov.au)