



**PENRITH LOCAL AREA COMMAND  
MINUTES OF THE PENRITH/ST MARYS INAGURAL  
COMMUNITY SAFETY PRECINCT COMMITTEE**

**Doug Kelly Conference Room  
Level 2, Penrith Local Area Command  
23 March 2009**

**Meeting Opened:** 10:08am, by Chair, Supt Ben Feszczuk

**Attendees:** Superintendent Ben Feszczuk APM, Commander, Penrith LAC  
Superintendent Ray Filewood, Commander, St Marys LAC  
Detective Insp Grant Healey, Crime Manager, Penrith LAC  
Insp Anthony Holton, Crime Manager, St Marys LAC  
Insp Kevin Dodds, Duty Officer, St Marys LAC  
Sgt Simon Curry, St Marys LAC  
Sgt Mark Wilkinson, Intelligence Officer, Penrith  
Mrs Deanne Bell-Smith, Executive Officer, Penrith LAC  
Ms Karyn Paluzzano, Member for Penrith  
Ms Yvonne Perkins, Penrith City Council  
Mr David Burns, Penrith City Council  
Ms Gladys Reed, Penrith City Centre Association  
Mr Mark Gold, Security Manager, Westfield Penrith  
Mr Max Harrison, Kingswood Traders Association.

**Apologies:**

Mr Allan Shearan MP, Member for Londonderry  
Mr Jim Aitken, Mayor, Penrith City Council  
Ms Melissa Dransfield, CEO, Centre Management, Westfield  
Det Insp Chris Keen, St Marys LAC

**Adoption of previous Minutes:** Minutes of previous meeting accepted by Karyn Paluzzano and seconded by Gladys Reed

**Supt Feszczuk advised of disposal of PACT and presented details and expectations of the new Community Safety Precinct Committee.**

**Relevant documentation as follows:**

# Community Safety Precinct Committees Crime Prevention Framework Policy Document 2008



**Crime Prevention Unit  
2008**

**Prepared by the Policy and Programs Command, Field Operations**



**NSW POLICE FORCE DOCUMENT**

## **Introduction**

---

Crime can have a devastating effect on the lives of victims and their families, the families of offenders and local communities. We all want to live in a safe, just and harmonious community. Achieving this vision requires coordination and commitment. Crime prevention is not just the responsibility of the NSW Police Force; everyone has a part to play in this important work. Other Commonwealth, State and Local government agencies can contribute significantly to reducing or preventing the levels of crime within a community by addressing issues which contribute to these behaviours. Similarly local businesses and community members have a critical role to play in the development and implementation of local crime prevention approaches and initiatives through the new Community Safety Precinct Committees.

The recently established Crime Prevention Framework recognises Crime Prevention Partnerships, local crime prevention planning and Community Safety Precinct Committees as the local mechanisms for crime prevention in NSW:

- a. Crime Prevention Partnerships are co-ordinated by the Department of Premier and Cabinet and lead locally by NSW Police;
- b. Crime prevention planning is supported by the Children (Protection and Parental Responsibility) Act 1997, co-ordinated by NSW Attorney General's Department and lead locally by local councils; and
- c. Community Safety Precincts are generally chaired by Police Local Area Commanders with the exception of rural communities where the delegated Duty Officer may undertake this task with participation from local council, community members and business owners

## **What is a Community Safety Precinct Committee?**

---

Community Safety Precinct Committees (CSPCs) provide an opportunity for local Councils and community members to meet with Police Local Area Commanders and share their perspective on local crime and safety issues. It provides the opportunity for community members and business owners to get involved in strategies designed to address local crime concerns. It also provides an opportunity for Local Area Commanders to promote accurate local crime information and raise awareness of crime prevention approaches. In some instances, CSPCs will participate in other local crime prevention initiatives, such as crime prevention planning and Crime Prevention Partnerships (CPP).

Local problems, local solutions will be actionable via this committee with the establishment of local working groups to tackle various crimes within the LAC. The working group will report to the CSPC each quarter with a progress update. Assistance can be sought from the Premier's Regional Co-ordination Management Groups (RCMGs). The RCMG's role will be to oversee cross-agency local action where required or to support implementation of regional solutions

CSPC are already working in various forms within Local Area Commands (LACs). Their success is attributed to the local knowledge of the community and police. Their outcomes have resulted in many local crime prevention strategies being implemented.

## **What is a Crime Prevention Partnership**

---

In priority areas, as determined by crime data analysed by the Bureau of Crime Statistics and Research and considered by the Steering Group, Crime Prevention Partnerships (CPPs) operate. CPPs have a mandate to drive crime prevention and reduction initiatives at a local level in priority locations. As such, they are accountable for the delivery of the targets relevant to their local area set by the Crime Prevention Steering Group in accordance with the State Plan. CPPs are a formal partnership between local council and local representatives of the NSW Police Force, relevant NSW Government agencies (which may include the Departments of Housing, Education and Training, Community Services, Health, and the Office of Liquor, Gaming and Racing), local transport companies, and other agencies as relevant and appropriate. CPP boundaries are based on NSW Police Force Local Area Command boundaries and are referred to by the name of the relevant Local Area Command. Where established, CPPs are the operational vehicle through which coordinated crime prevention planning occurs.

## **Operational readiness of a Community Safety Precinct Committee without a Crime Prevention Partnership (CPP)**

---

The CSPC will operate independently in every command regardless if a CPP is established or not. In the event that a CPP is established the CSPC will be used to filter information and intelligence to the CPP and cross pollinate the information back down to the CSPC.

The CSPC will be a local actionable committee which will sit every quarter. The commander or delegated officer will chair the meeting. The CSPC is locally flexible to meet the needs of the command and can operate in conjunction with joint commands or local government areas. The CSPC are open forums for members of the community to voice their concerns about crime and provide valuable intelligence to Police.

The CSPC also enables local communities to consult and participate with local Police Commanders in reducing crime.

## **Planning and operation of the CSPC**

---

The purpose of CSPCs is to:

- Ensure Local Area Commanders are communicating to their local communities;
- Encourage community partnerships to reduce crime and the fear of crime;
- Develop local solutions to local crime in partnership with local stakeholders;
- Improve public safety and reduce the fear of crime at a local level;
- Raise understanding of the relationship between policing and crime reduction; and
- Ensure Commanders take into account local community views on police visibility, police deployment and crime hotspots when deciding police tasking and deployment.

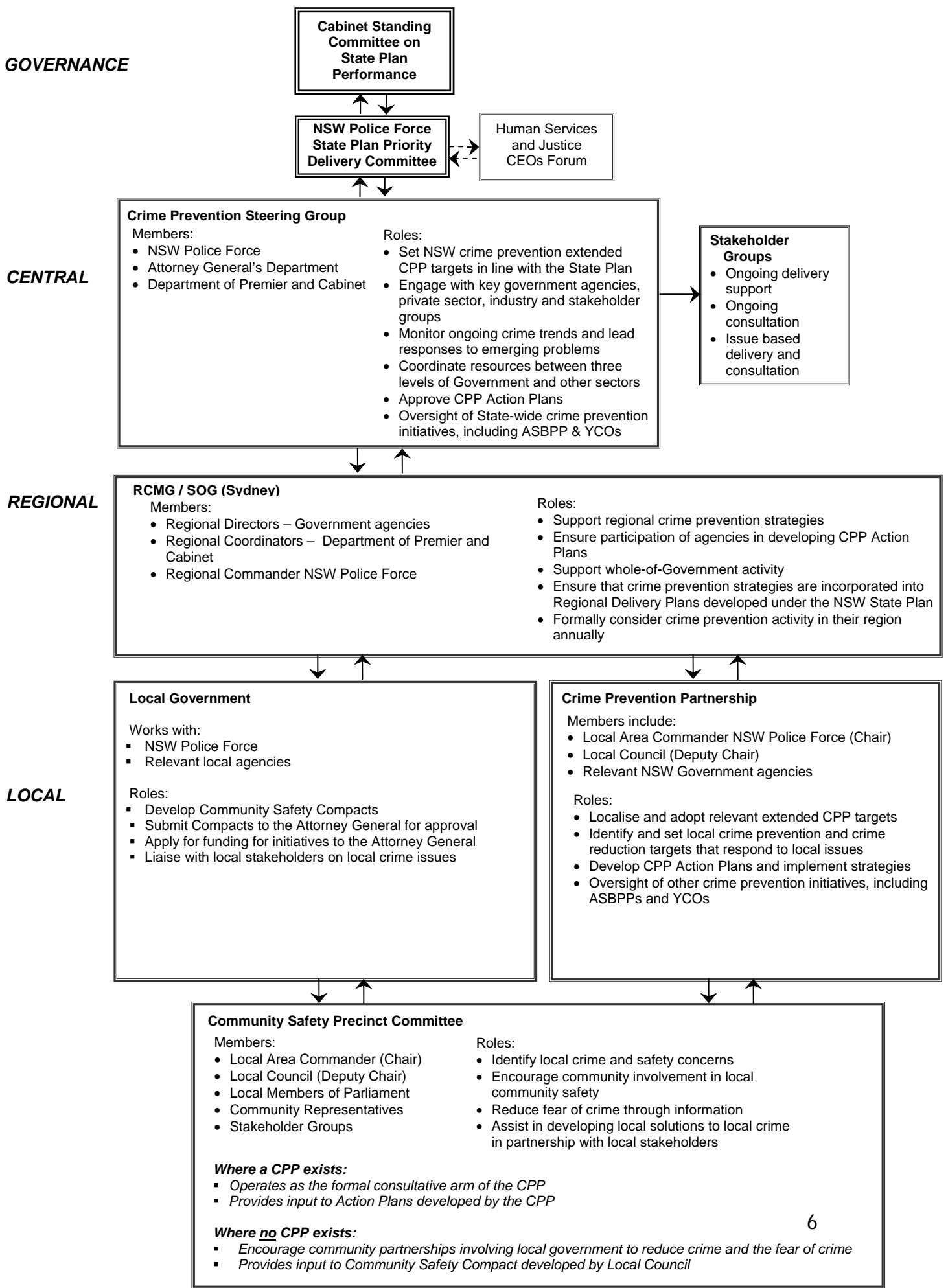
CSPC operates locally under the following rules:

1. CSPCs are a forum to ensure that community views about police visibility, police deployment and crime hotspots are taken into account by the LAC when making decisions about the deployment and tasking of Local Area Command police, and that each LAC is accountable to his/her local community for those decisions;
2. CSPCs are held quarterly with dates determined by the LAC. They are to be convened on a Local Area Command basis by each NSW Police Force LAC. The LAC arranges for the date and agenda of each CSPC meeting to be publicly notified at least 14 days prior to that meeting;
3. The LAC chairs all CSPC meetings. However, in rural areas this geographically may be difficult, so the delegated Duty Officer may chair the meeting;
4. The LAC is to invite local MPs, Local Mayors, and the heads of local State Chambers of Commerce and local community members to attend each meeting;
5. The CSPC can refer any matters that require further assistance from the RCMG;
7. CSPC agendas are determined by the LAC to include the following standing items:
  - Crime hotspots in the Local Area Command
  - Police visibility and deployment in the Local Area Command
  - Issues and decisions of the previous meeting
  - Action taken in respect of working groups being established to tackle local crime issues.
9. The LAC arranges for a CSPC Meeting Report, containing issues and decisions from the meeting to be publicly promulgated within 14 days of each meeting, and is published on the Intranet and Internet;

Sub CSPCs may be set up in geographically large LACs, with several regional centres, several Local Government Areas (LGAs), or more than one State Electorate. Sub CSPCs are chaired either by the Commander or a Duty Officer and the local community is represented, at a minimum, by the local council and existing community groups or committees. Sub CSPCs engage local communities in the communication process, and provide the same level of accountability as LAC- CSPCs while overcoming the problems of distance. The Sub CSPC focuses on local crime issues, and provides a Meeting Report of issues and decisions to the Commander, for use at the LAC-CSPC. It may even be useful for a Sub CSPC to elect a representative on the LAC-CSPC.

PACT forums will no longer exist. CSPCs will embrace various attributes of the PACT forums but will be a stronger, robust and open committee addressing local problems. It is mandatory that at least one CSPC is established in every Command across NSW.

# Crime Prevention Framework Structure



## Business arising from

### Previous PACT minutes:

#### **Supt Feszczuk**

Effects of DV kits. Supt Feszczuk advised committee that there is no current data available regarding the success and/or conviction rates of the kits.

It is assumed that inclusion of the kits will increase conviction rates.

Det Insp Grant Healey advised that the kits had been utilised 19 times this year and there is anecdotal evidence that by using the kits there have been better outcomes in the court. At this current time the Penrith LAC are still utilising notebooks for statements purposes rather than visual audio. However, stills are still being taken.

St Marys LAC advised that they are using the audio visual however when required for court it is required that transcripts are provided. This is a costly exercise and costs are to be found within the LAC budget.

Discussion ensued regarding the pros and cons of the audio visual evidence.

#### **Det Insp Grant Healey**

Advised of commencement of CPP mid last year with three practices accepted in parliament. Penrith have achieved their benchmark and have an excellent partnership and working relationship with council. CPP was meeting monthly but has now commenced meeting on a six week basis.

Penrith was identified as an extreme risk for alcohol related crime and since implementation of the CPP has been lowered to a high risk. Violence has also dropped dramatically.

Funding has been granted for fencing of the Jane St car park re control study of break and theft of vehicles.

#### **Gladys Reed**

Advised of security provided for area surrounding the Embassy and Cow hotel in Penrith. When speaking with the relevant security officer it was advised that their presence was having a large positive impact. The security staff is currently being funded by the Penrith City Centre Association, however the larger Penrith community need to fund this as a long term investment as the Association cannot continue full funding. At present it is approximately 70 thousand dollars a year to fund

and local businesses have committed approximately 20 thousand.

Suggestion was made that sites/premises where alcohol was served contribute to the funding and this issue will be raised at the next alcohol accord meeting.

Further discussion ensued regarding situation of crime and evaluation of the success of the added security.

**Correspondence In:** correspondence forwarded by Deputy Commissioner regarding end of PACT and provision of the new SCPS. Ref D/2009/34850 refers.

**Correspondence Out:** minutes of previous minutes and Agenda

**Crime Review:**

 **Penrith LAC – Presented by Supt Ben Feszczuk**

### **Crime: Penrith LAC**

Discussion regarding Penrith having alcohol venues in states top fifty for alcohol related crime and the use of raw statistics.

Sgt Mark Wilkinson explained the recording of statistics in relation to assault.

Karyn Paluzzano made request for LCC to attend SCPS meeting and Supt Feszczuk will now forward invitation to Trish Maher to attend on behalf of the DV coalition. Additionally, there are current changes to Legislation in relation to Community Services re Schools Health and Police reporting group. Supt Feszczuk advised of no official notification at this time.

Compass crime data for the period July 2008 to February 2009 was reviewed.

### **Overall Results**

In all but two of the key crime categories the Penrith LAC is performing better than BP target. Only the crime categories Break and Enter – Dwelling and Assault (DV related) are over target by 4.7% and 0.6% respectively. The incidence of Break and Enter – Dwelling is 8.9% higher and Assault (DV related) is 8.1% higher when compared with the same period last year.

## **Top Ten Crime Categories**

A chart showing the top ten crime categories was tabled, with Stealing, Malicious Damage, and Assault being the three most frequently occurring crimes in the period year to date 2009.

## **Crime by Suburb**

A chart showing crime by suburb was tabled, with Penrith (44%), Cranebrook (14%), and Glenmore Park (10%) being the suburbs which account for 78% of the crime occurring in Penrith LAC.

## **Trends**

### **Assault**

Assault (Non-DV) is trending below last years' actual level and is currently 14.2% below BP target. 26% of all Assault incidents are alcohol related, however Alcohol Related Assault is trending below last years' actual level and is currently 19.2% below BP target. DV Related Assault is trending slightly above last years' actual level and is currently 0.6 above BP target. Sexual Assault is trending below last years' actual levels and is currently 8.7% below BP target.

### **Break and Enter**

Break and Enter (Non-dwelling) is trending below last years' actual level and is currently 14.1% below BP target. Break and Enter (Dwelling) is trending above last years' actual level and is currently 4.7% above BP target. A chart showing Break and Enter by suburb was tabled, with Penrith (36%), Cranebrook (16%), and Glenmore Park (16%) being the suburbs which account for 68% of the crime occurring in Penrith LAC. In the year to date 69% of Break and Enter incidents were committed upon residential premises, while 16% were committed upon Commercial/Business premises.

### **Robbery**

Robbery is trending well below last years' actual level and is currently 34.5% below BP target.

### **Stolen Vehicles**

Stolen Vehicles is trending well below last years' actual level and is currently 25.3% below BP target.

### **Fraud**

Fraud is trending below last years' actual level and is currently 4.4% below BP target.

### **Malicious Damage**

Malicious Damage is trending below last years' actual level and is currently 17.2% below BP target.

### **Stealing (ex SFMV)**

Stealing (ex SFMV) is trending below last years' actual level and is currently 14.1% below BP target.

### **Steal From Motor Vehicle (SFMV)**

Steal From Motor Vehicle is trending well below last years' actual level and is currently 29.7% below BP target. Year 2009 to date Steal From Motor Vehicle represents 32% of all Stealing.

### **Stealing**

Stealing is trending below last years' actual level and is currently 29.7% below BP target. 24% of all Stealing is Steal From retail Store.

### **Proactive Policing**

Charts for year to date 2009 were tabled showing tasking and deployment of police by crime category and by location.

## **St Marys LAC – Presented by Supt Ray Filewood**

Supt Ray Filewood and Insp Anthony Holton advised of listed initiatives undertaken by St Marys LAC to reduce DV related crime.

Supt Feszczuk advised of closure of Penrith Custody area due to re-construction in which the St Marys custody area will be utilised. Reconstruction commences on the 27 April 2009 and it is expected to be completed within 6 to 8 weeks.

### **ST MARYS PACT – CRIME**

- Compass shows St Marys LAC currently below the business plan targets for Assault (Non-DV), Robbery, Stolen Vehicles, Assault (DV- Related), Stealing (excluding Steal from Motor Vehicle).
- Compass shows St Marys LAC currently above the business plan targets for Sexual Assault, Break and Enter – Dwelling, Alcohol Related Assault, Break and Enter – Non Dwelling, Fraud, Malicious Damage and Steal from Motor Vehicle.
- The top crime categories for the St Marys LAC are: Domestic Violence – No Offence, Malicious Damage, Stealing, Assault, Break and Enter and Fraud.
- St Marys has the most volume crime followed by Kingswood then St Clair.
- Assault Non-DV is under the business plan. Domestic Violence is the number 1 associated factor, followed by alcohol related.
- Alcohol related assaults are above the business plan.

- Sexual Assaults are above the business plan but an analysis shows that a majority are sexual assaults that are reported to JIRT, i.e. child abuse cases.
- The hotspot for break and enter is Kingswood, followed by St Marys. The hot spot areas are being targeted by Operation BOMBARA 4.
- Robbery is well below the business plan and decreasing.
- Stolen vehicles are below the business plan. The two hotspots are car parks in Kingswood and St Marys. Older model vehicles particularly Holden Commodore's and Toyota Camry's are the most popular cars.
- Fraud is above the business plan. 80% of frauds are Fail to Pay for petrol offences. There are some eBay fraud's as well.
- Malicious Damage is above the business plan. 20% of that is graffiti, mostly in the Kingswood, Cambridge Park, Werrington areas and in St Clair and Erskine Park. Police are targeting known offenders. The other Malicious Damage offences are generally random in nature or Domestic Violence Related.
- Steal from Motor Vehicle accounts for the majority of all stealing's. These mostly occur in car parks in St Marys and Kingswood.
- A break down of St Marys LAC Proactive Policing statistics shows that Kingswood was the most targeted suburb followed by St Marys CBD, Cambridge Park, Werrington, St Clair and Erskine Park and Warragamba.
- Operation REPON continues; targeting anti-social behaviour and alcohol related crime in Warragamba.

**Contentious Issues:** **Yvonne Perkins** had heard of influx of heroin into the country and questioned if there was any indication of this in the Penrith/St Marys areas. It was suggested that used syringes had been found in the Glenmore Park area. A public meeting is to be held on Sunday and statistics will be forwarded to Supt Feszczuk. An information kit has been produced by the Penrith Council providing information as to what action person should take if they find a syringe.

**Max Harrison** advised of his excellent rapport with the Penrith LAC and this relationship has continued with Supt Filewood and the St Marys LAC. Mr. Harrison expressed his gratitude to the St Marys LAC for their swift response times.

**Mark Gold** advised of steal from person incidents regarding stealing of handbags is on the rise and it appears to be a train network group undertaking these offences.

Graffiti is down at the centre, however, unruly behaviour and assaults early on Thursday evenings is an ongoing issue. Supt Feszczuk advised of Viking Operations to correspond with this time and

additional HWP taskings of this area. Mr. Gold commented on the excellence of the Penrith bike team

## **FEEDBACK FROM PACT MEMBERS**

Supt Ray Filewood advised members of industrial action undertaken at the St Marys Command in the second half of last year regarding staffing g issues. As a result of this action the St Marys Command have been allocated an additional six constable positions. One of these officers will undertake DV duties and the other five will undertake general duties within the Command. In addition to these officers, St Marys received fifteen new recruits during December 2008.

Supt Feszczuk advised of the St Marys bike police being deployed within the Penrith LAC and joint operations were being looked at across both LAC's.

**New Business:** Nil

**Next Meeting:** next meeting subject to parliamentary sitting. Meeting to be held on a Monday during June and date will be advised

**Meeting Closed:** 12:25pm